

 mobileworld  
suite profile brochure

mobileworld.gr powered by



Maximize  
Sales



Minimize  
Costs



Amplify SFA  
Effectiveness

mobileworld is a single, agile, component based application suite that delivers a robust, holistic, and integrated solution, combining industry-leading SFA (Sales Force Automation), xVan, Warehouse and Supply Chain Management for the most demanding and innovative businesses.

## maximize sales


## minimize losses

"mobileworld" is branded under the software company INFOSUPPORT, based in Athens, Greece.

One of the strongest advantages of "mobileworld" is the vast experience and integration for businesses highly involved in the merchandise distribution of sensitive products, such as dairy products.

With case studies of the most known brands in the business in 4 countries (Greece, Cyprus, Turkey, Bulgaria), "mobileworld" is a synonym to xVan, SFA (Sales Force Automation), Warehouse Management and more.

DELTA FOODS S.A., EVOL DAIRY, SERGAL DAIRY, UNO EKMEK, MEVGAL DAIRY, STERGIOU FAMILY BAKERIES, NOYNOY MILK, AB VASILOPOULOS SUPERMARKET are a few of our successful stories and case studies we take proud of.



INFOSUPPORT was founded in 1990. It is one of the most dynamic Greek companies providing integrated solutions and IT services operating in 4 countries (Greece, Cyprus, Bulgaria, Turkey).

INFOSUPPORT aims at developing and delivering innovative solutions that will give our partners competitiveness and flexibility



**Βασιλόπουλος**  
...και του πουλιού το γάλα!



indicative client list



οικογένεια  
**Στεργίου**

διαθέτουμε προϊόντες από κάθε περιοχή

Εγγύηση στο καλό κοτόπουλο!



## mobileworld Suite Features

Lot Management

Fixed Charges to 3rd Parties

Representative Management

Customer Contracts

Visit Management

Route Optimization

Web SFA Manager

Visit Forecasting

xVan Equipment

Offers - Gifts



## mobileworld Suite Features

Complete truck level lot management from loading to final counting

Interface with warehouse management programs

Minimize driver intervention

The system suggests older to newer lots (FIFO)

The driver may choose another lot when necessary

Flexible management of returned good and expired



## mobileworld Suite Features

**Hierarchies of regionals, inspectors, representatives, drivers etc.**

**Inspector roles (available on web environment)**

Request for new, return, replacement, transfer of fixed assets to direct or indirect customer

**Web Services roles**

Approvals - Changes

**Warehouse Company roles (web services)**

Agreements issuance

**Representative roles (web services)**

SN rendering and CA release to end customers

**Warehouse Representative roles (web services)**

Issuing agreements with end customers. commissioning, replacement management

**Driver / Seller Role (PDA, Tablet)**

Mandatory monthly inventory before ordering or invoicing



## mobileworld Suite Features

On a Virtual Server in the Cloud or on a conventional physical server in your office

Separate database for each agent, with access to its own data only

The database of each dealer includes the basic records of company documents, customers, items, pricelists, etc., as well as additional items and prices for items outside the company.

Daily automated synchronization between ERP and Agent databases for customers, items, pricing policy, offers etc. related to customers and company items (direct and indirect customers)

Daily automatic synchronization between back office and each dealer base for items, prices etc. off the company, as well as for loading records (optional - manual loading available).

Ability to control and maintain key files from each agent (linking and matching documents, clients, items, etc.) via mobileworld SFA Web Manager <sup>™</sup>

Ability to access a single reporting system (visit statistics, sales, indicators, goals, etc.) for each agent

### mobileworld Suite Features

Product group creation tool (static ranges) - customer groups

Assign product groups to customer groups

Prohibition or warning of contract breaches

Missing product placement reports or overshoots - product distributions

Easy central tracking of contract breaches - lost sales opportunities

Easy maintenance and adjustment to contract changes



## mobileworld Suite Features

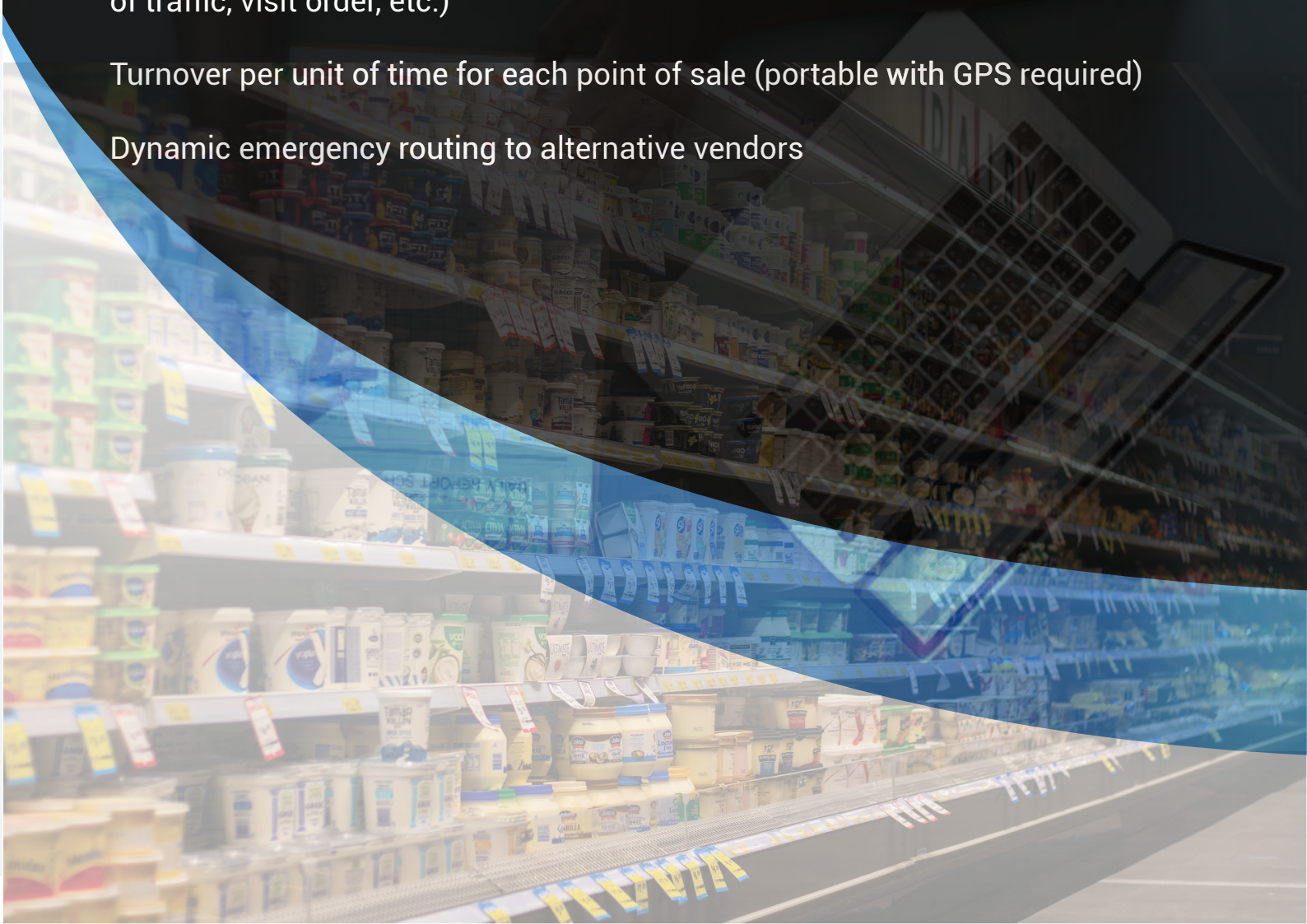
Manage scheduling and reporting visits with justifications for non-visit (non-invoicing) emergency visit

Sales per site or seller

Possibility of simultaneous administration by administrators and vendors (change of traffic, visit order, etc.)

Turnover per unit of time for each point of sale (portable with GPS required)

Dynamic emergency routing to alternative vendors



## mobileworld Suite Features

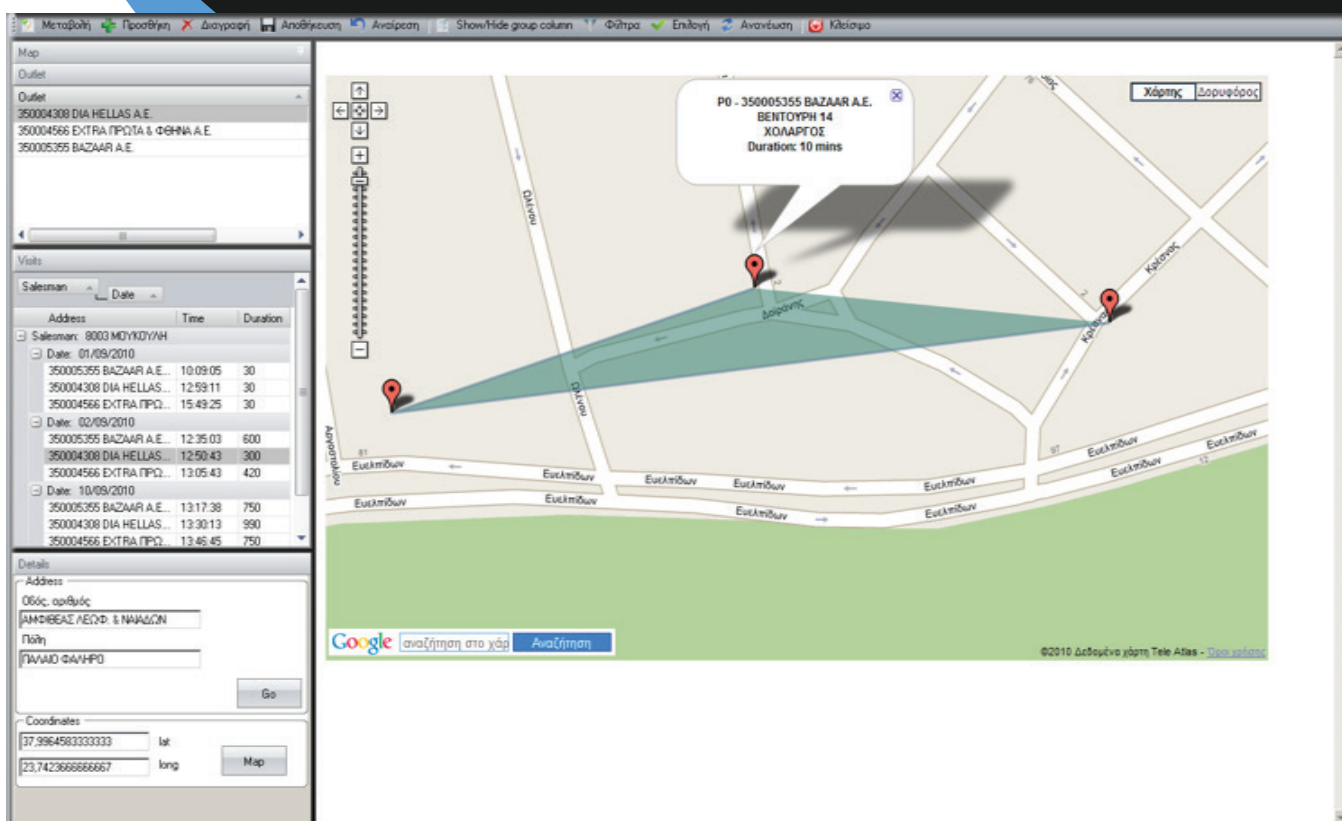
Recording coordinates of each point of sale (once)

Ability to redefine the coordinates if needed through a maintenance procedure

Possible registration of other points of interest (gas stations, customer headquarters, warehouses, etc.)

The system automatically collects the point of arrival at the point of sale and the duration of the visit (departure from the point of sale)

This information combined with other information from the Mobile World βά system database (point-to-point operations, turnover, point-to-point transition time, etc.) can be presented either analytically or graphically



WebManager - MOrders.MILKINF

Home

Print Print preview Print

Parameters

- Merchandising
  - Jobs
  - Jobs available answers
  - Combine Jobs with item categories
  - Appraisals types
  - Appraisals
  - Appraisal available answers
  - Promoters
- Sales
- Customers
- Warehouses

Parameters Reports Check records Admin parameters

Jobs (Merchandising)

Edit Add Delete Save Undo Show/Hide group column Filters Refresh Close

Drag a column header here to group by that column.

Abbreviation	Description	Ordinal	Only on items category	Last update	RecState
ΓΕΜΙΣΜΑ	ΓΕΜΙΣΜΑ ΡΑΦΙΟΥ	1	<input checked="" type="checkbox"/>	15/09/2009 12:47:03	Active
ΑΝΑΚΥΚ	ΑΝΑΚΥΚΛΩΣΗ	2	<input checked="" type="checkbox"/>	15/09/2009 12:47:03	Active
ΔΙΑΦΗΜ	ΤΟΠΟΘΕΤΗΝ ΔΙΑΦΗΜΙΣΤΙΚΟΥ ΥΛΙΚΟΥ	3	<input checked="" type="checkbox"/>	15/09/2009 12:47:03	Active
FACES	ΠΡΟΣΩΠΑ	1	<input type="checkbox"/>	02/10/2009 14:29:02	Active
O.O.S	Out of Stock	2	<input type="checkbox"/>	08/10/2009 12:44:22	Active

Record: 1 Of 5

WebManager - MOrders.MILKINF

Home

Print Print preview Print

Parameters

- Merchandising
  - Jobs
  - Jobs available answers
  - Combine Jobs with item categories
  - Appraisals types
  - Appraisals
  - Appraisal available answers
  - Promoters
- Sales
  - Static Ranges
  - Customer Categories
  - Item Categories
  - Define Static Ranges
- Customers
  - Categories
  - GPS
  - GPS Outlets
  - GPS Points of Interest
- Warehouses
  - Categories (MW)

Parameters Reports Check records Admin parameters

GPS Outlets (GPS)

Edit Add Delete Save Undo Show/Hide group column Filters Refresh Close

Drag a column header here to group by that column.

Outlet	Date	lat	lng	alt	Tolerance	Last update	RecState
350005476 BAZAAR A.E.	14/10/2010 ...	38.00502	23.664725		86	10/11/2010 13...	
350003697 ΠΕΝΤΕ Α.Ε.	14/10/2010 ...	38.016575	23.67978166666...		86	10/11/2010 13...	
350004171 Α/Β ΒΑΣΙΛΟΠΟΥΛΟΣ Α.Ε.	14/10/2010 ...	37.991865	23.68155		86	10/11/2010 13...	
350005242 ΚΑΡΦΟΥΡ ΜΑΡΙΝΟΠΟΥΛ...	14/10/2010 ...	37.99815	23.665685		86	10/11/2010 13...	
350005277 ΚΑΡΦΟΥΡ ΜΑΡΙΝΟΠΟΥΛ...	14/10/2010 ...	38.00945833333...	23.680185		86	10/11/2010 13...	
350001005 ΒΕΡΟΠΟΥΛΟΙ ΑΦΟΙ Α.Ε.Β...	14/10/2010 ...	37.99976833333...	23.684025		86	10/11/2010 13...	
350001018 ΒΕΡΟΠΟΥΛΟΙ ΑΦΟΙ Α.Ε.Β...	14/10/2010 ...	38.011245	23.64721833333...		86	10/11/2010 13...	
350001041 ΒΕΡΟΠΟΥΛΟΙ ΑΦΟΙ Α.Ε.Β...	14/10/2010 ...	37.99326333333...	23.67315833333...		86	10/11/2010 13...	
350004026 Α/Β ΒΑΣΙΛΟΠΟΥΛΟΣ Α.Ε.	14/10/2010 ...	38.00857	23.688945		86	10/11/2010 13...	
350004083 Α/Β ΒΑΣΙΛΟΠΟΥΛΟΣ Α.Ε.	14/10/2010 ...	38.012855	23.66389		86	10/11/2010 13...	
350004140 ΜΕΤΡΟ Α.Ε.Β.Ε.	14/10/2010 ...	38.01233	23.654465		86	10/11/2010 13...	
350004138 ΜΕΤΡΟ Α.Ε.Β.Ε.	14/10/2010 ...	38.01265	23.68647833333...		86	10/11/2010 13...	
350004352 ΜΕΡΙΜΝΑ Α.Ε.Ε.	14/10/2010 ...	38.01405666666...	23.677385		86	10/11/2010 13...	
350003212 ΑΡΓΩ ΜΑΡΚΕΤ Α.Ε.Ε.	14/10/2010 ...	38.00719	23.67437		86	10/11/2010 13...	
350003198 ΠΕΝΤΕ Α.Ε.	14/10/2010 ...	38.00871	23.66196166666...		86	10/11/2010 13...	
300017812 ΛΑΜΠΡΟΥ ΔΗΜ. ΠΑΝΑΠ...	15/10/2010 ...	38.089112	23.8186245		86	30/11/2010 13...	
300020233 ΜΑΡΚΟΠΟΥΛΟΣ Μ. ΚΟΤΤ...	15/10/2010 ...	38.11774434722...	23.84110450744...		86	01/12/2010 10...	
300020533 ΚΟΜΗΝΗΝΟΣ ΑΡΙΣΤΕΙΔΗΣ	15/10/2010 ...	38.1085395	23.839081		86	01/12/2010 11...	

Record: 1 Of 18

mobileworld Suite Features

Algorithms for creating order-by-point-of-sale and product orders

Improved production process management, by better forecasting aggregate demand for the next 3-7 days, for some or all of the products, based on the projected demand of each point of sale, through sophisticated ordering algorithms.

Improved order management of each point of sale orders, with clear division of responsibility for the management of each point of order at all stages of ordering (proposal generation and production forecasting, vendor validation, distribution and final shipment management)

Consequently, reducing the rate of refunds without losing sales opportunities



CTMX	0.45	▲	+0.41
FTR	-0.23	▼	-2.34%
CSCO	-1.01	▼	-1.89%
CHK	0.02	▲	+0.21
AAPL	+2.59		
PRTO	-0.01		
AMZN			
TSLA			
AVGO	0.37		
SIRI	-0.65		



## mobileworld Suite Features

End users (drivers, trucks, itineraries) can choose between Android Smartphones and tablets, Windows 10 tablets and Windows Mobile 6.5 PDA's, and Blue Tooth impact or thermal printers

The system supports mixed environment (Windows and Android portable, impact and thermal printers etc.)

Android devices do not need a separate Bar Code Reader

Infosupport offers a single solution for all users with Android devices and thermal printers, for low operating and maintenance and support costs



## mobileworld Suite Features

Bid packages (two or more items in a given number give one or more gifts)

Calculate and propose gifts based on algorithms (e.g. with 5 items one of the same or another one as a gift, with 10 items two of the same etc.)

Minimum number of products from one or more item groups gives you the option to select a maximum number of gifts from another item category

Ability to manage and track quantitative and value goals per vendor for item groups over a specified period of time

Corresponding capability for enhancing the minimum return as more as possible

**SPECIAL  
PRICES**



INFOSUPPORT S.A., 8 Doiranis str., Athens, 113 62, Greece

Email: [info@mobileworld.gr](mailto:info@mobileworld.gr) - Website: [mobileworld.gr](http://mobileworld.gr)  
Phone: +30 210 88 97 700 - Fax: +30 210 88 97 738